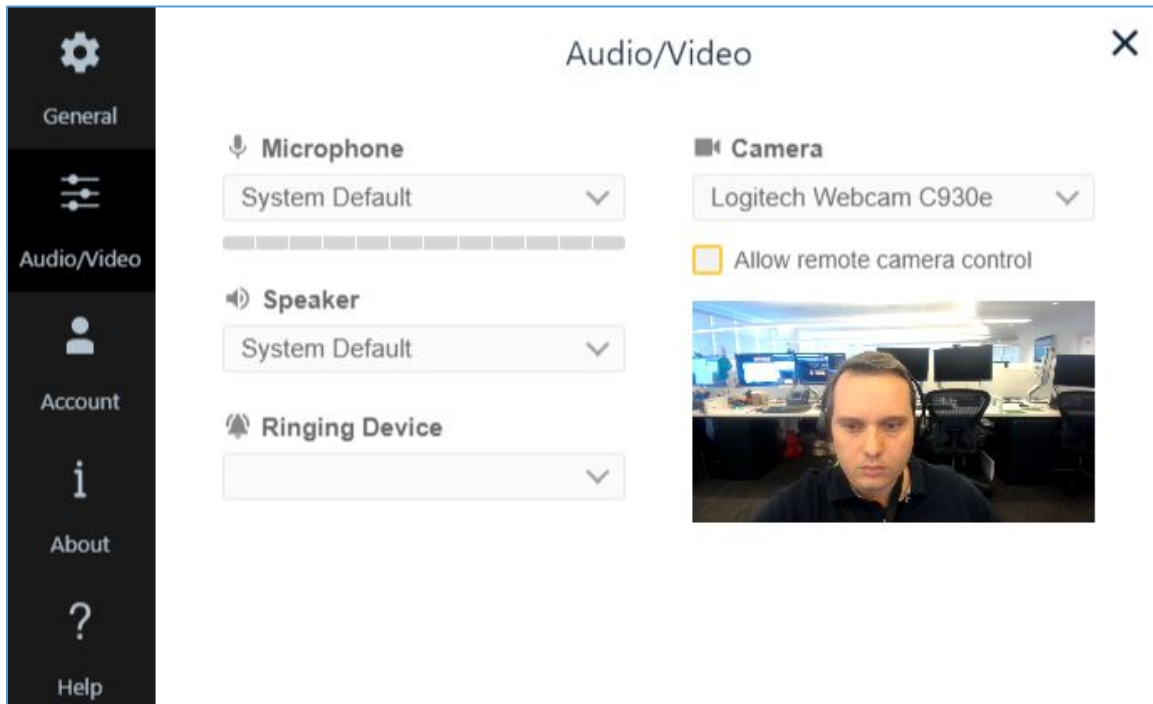


## Audio/Video Settings

### Audio Settings

To optimize your NEXI experience, your audio devices (microphone and speaker) are set using your PC's Sound property settings. Hover over each audio device and a tooltip box to display the device settings for the Microphone, Speaker, or Ringing Device on your PC. A typical desk with a Plantronics Savi headset should display the following settings:

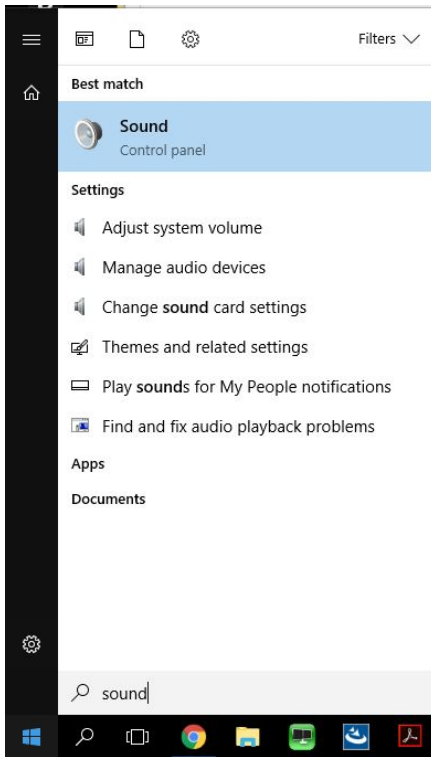


**NOTE:** If you need assistance to update the settings, enter an SDSK to keyword "PC Settings"

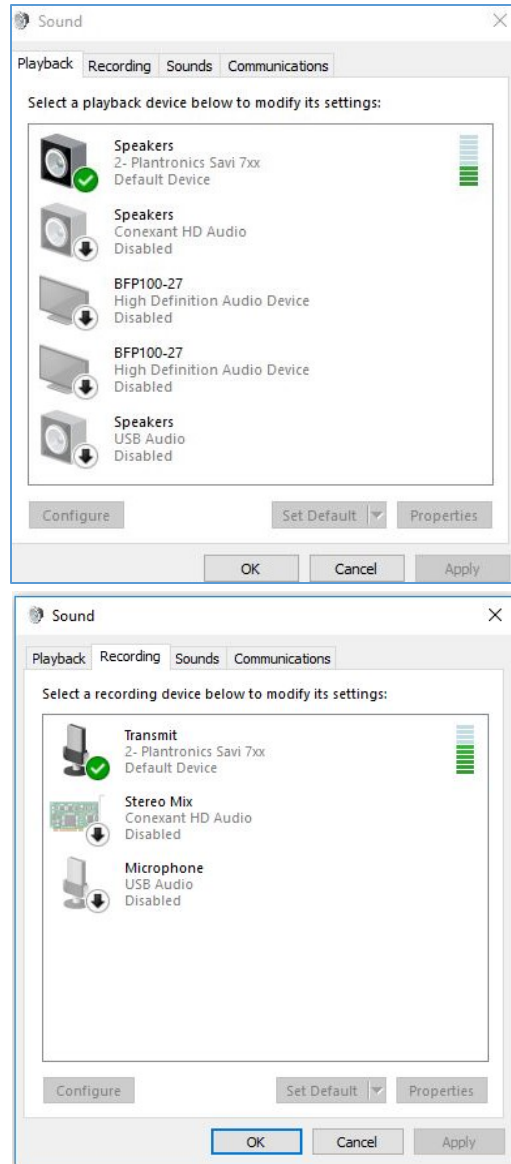


## Managing Audio Devices

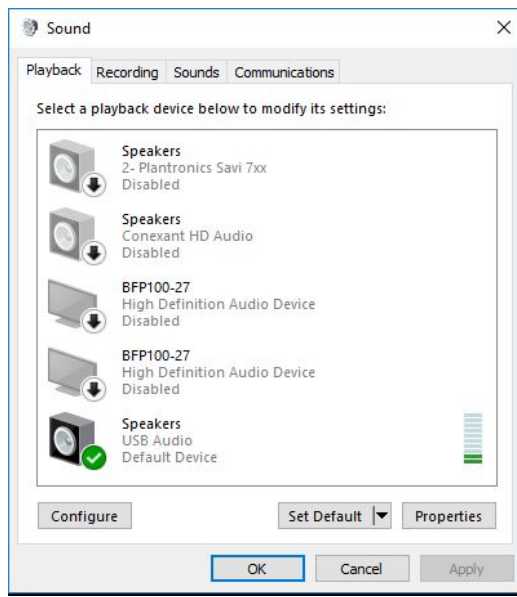
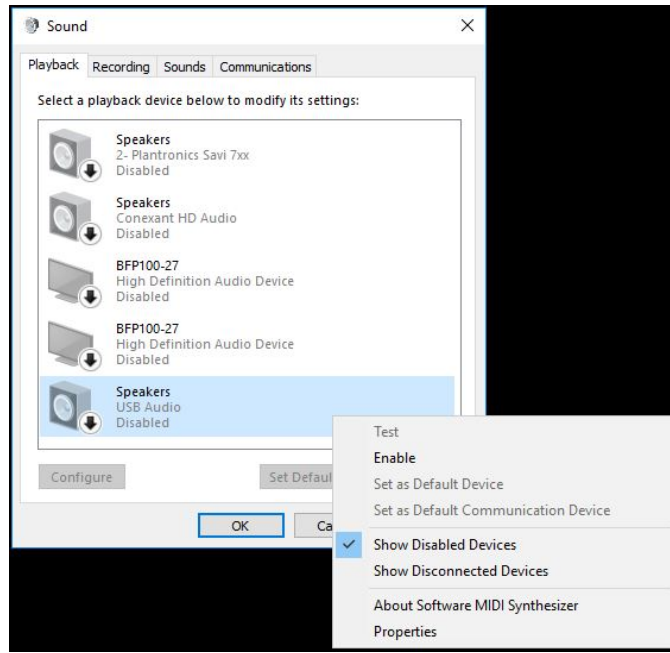
1. To manage the audio devices on your PC, right click the speaker icon on the right side of your Windows taskbar, or click the magnifying glass on the left side, search on “*sound*”, and select the **Sound** option:



2. At a typical Bloomberg desk, the Plantronics Savi headset is set as the primary playback and recording device, as shown here:



3. If you connect headphones via the Bloomberg keyboard or PC, you must change your settings to set the keyboard or PC as the *Default Device*, and the headset as the *Default Communications Device*. NEXI will always set the microphone and speaker as the *Default Communications Device* if you use additional devices. To do this, right click one of the enabled devices and select either **Set as Default Device** or **Set as Default Communications Device**.



**NOTE:** The Bloomberg Keyboard also has a built-in microphone; however it is strongly advised that if the microphone is enabled as the *Default Communications Device*, right click to disable it and select your headset device.

## Camera Settings

To check your camera settings, click the **Settings** icon in the upper right corner of the NEXI main screen, then click the **Audio/Video** icon to display your audio/visual settings.

**Audio/Video** ✕

**General**

**Audio/Video**

**Account**

**About**

**Help**

**Microphone**

System Default

**Speaker**


System Default

**Ringing Device**

**Camera**

Logitech Webcam C930e

Allow remote camera control



- A preview of your camera is available to verify if NEXI detects the camera.
- A checkbox is available to **Allow remote camera control**, which enables other users to adjust your camera if you are sitting off center or otherwise not visible. **NOTE:** This function is only available *during a call*, and is intended to provide minor adjustments for the convenience of others speaking to you.

## Notification Sounds

When you are on a NEXI call, you may want to mute the chime sound, which indicates when people join or leave the call. In the *Audio/Video* section, uncheck **Enable notification sounds** to mute the notifications.

