

27" FLAT PANEL S-SERIES

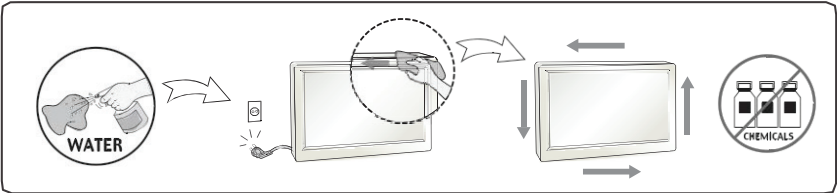
TECHNICAL INFORMATION

Bloomberg

27" FLAT PANEL S-SERIES

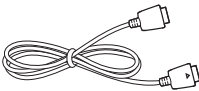
IMPORTANT PRECAUTIONS

- » Spray water onto a soft cloth 2 to 4 times, and use it to clean the front frame; wipe in one direction only.
- » Too much moisture may cause staining.



ASSEMBLING & PREPARING

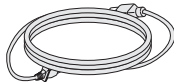
Accessories Included



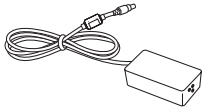
Display Port Cable



Display Port Cable
(y-type)

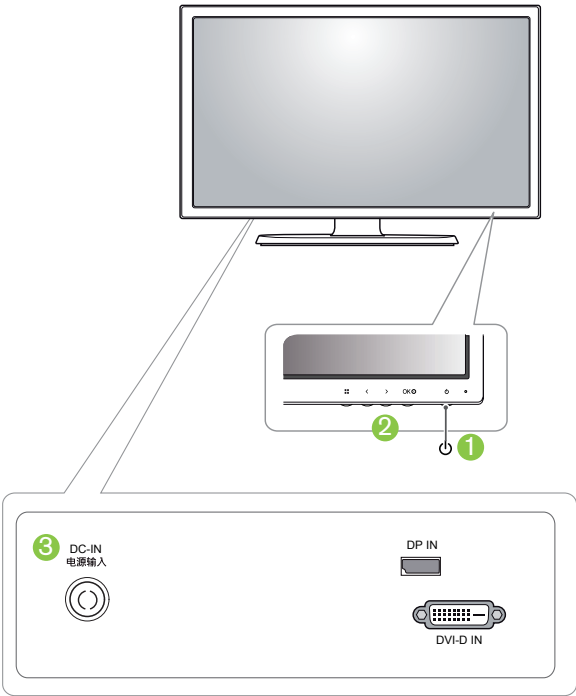


Power Cord



AC/DC Adaptor

Component & Button Description



- 1 Power button
- 2 Touch buttons on the bottom of the monitor
- 3 Input connector

27" FLAT PANEL S-SERIES

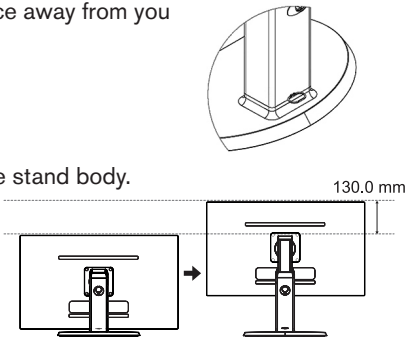
MOVING & LIFTING THE MONITOR

» When holding the monitor, the screen should face away from you to prevent it being scratched.

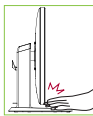
Adjusting the Stand Height

- 1) Place the monitor mounted on the stand base in an upright position.
- 2) Pull out the locking pin at the bottom rear of the stand body.
- 3) The height can be adjusted up to 130.0 mm (5.2 in.)

Caution: Once the pin is removed, it is not necessary to re-insert it to adjust the height.

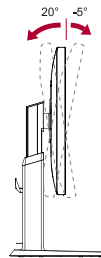


Warning: Do not put your fingers or hand between the screen and the base (chassis) when adjusting the screen's height.

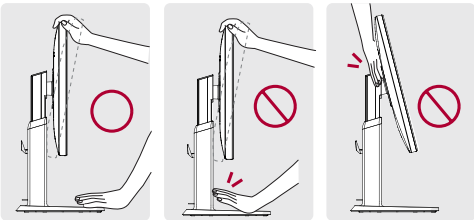


Adjusting the Angle

- 1) Place the monitor in an upright position, mounted on the stand base.
- 2) Adjust the angle of the screen. The angle of the screen can be adjusted forwards or backwards from -5° to 20° for a comfortable viewing experience.



Warning: To avoid injury to the fingers when adjusting the screen, do not hold the lower part of the monitor's frame as illustrated below.



27" FLAT PANEL S-SERIES

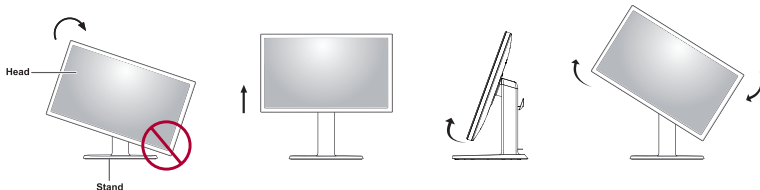
Pivot Feature

The pivot feature allows the monitor to rotate 90° clockwise.

Note: To avoid scratching the stand base, make sure that when rotating the monitor using the pivot feature, the stand does not make contact with the monitor.

Note: An image displayed on the monitor's screen does not rotate according to the screen orientation. Adjust Settings accordingly.

- 1) Raise the monitor up to the maximum height.
- 2) Adjust the angle of the monitor in the direction of the arrow as shown in the figure.
- 3) Rotate the monitor clockwise as shown in the figure to 90°.



USING THE MONITOR

Connecting to a PC

This monitor supports the “Plug and Play” feature.

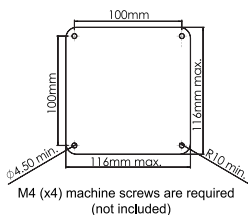
- » Plug and Play – A feature that allows you to add a device to your computer without having to reconfigure anything or install any manual drivers.

Note:

- » When connecting the power cord to the outlet, use a grounded (3-hole) multi-socket or a grounded power outlet.
- » The monitor may flicker when turned on in an area of low temperature. This is normal.
- » Sometimes red, green or blue spots may appear on the screen. This is normal.

WHEN MOUNTING WITHOUT A STAND

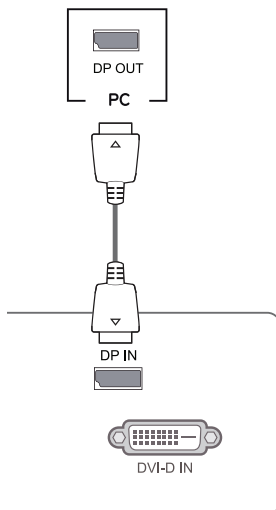
Monitor Mounting Plate Details



Display Port Connection

A DMS-59 to dual Display Port Y-cable is provided for connection to a PC with a DMS-59 video output.

Connect your PC to the monitor using the display port cable as illustrated below. Press the menu button and then select the input option from the input menu.



27" FLAT PANEL S-SERIES

SPECIFICATIONS

Model Number – BFP100-27

Display	Screen Type	27" class (27.0" diagonal) TFT (Thin Film Transistor) LCD Liquid Crystal Display) Screen. Diagonal length of the screen: 68.47 cm
	Pixel Pitch	0.2331 mm x 0.2331 mm
Resolution	Maximum Resolution	2560 x 1440 @ 60Hz
	Recommended Resolution	2560 x 1440 @ 60Hz
Video Signal	Horizontal Frequency	30 kHz to 90 kHz
	Vertical Frequency	57 Hz to 75 Hz
	Synchronization	Separate Sync
Input Connector	DVI-D, Display Port	
Power	Voltage	19-19.5 V $\overline{\text{---}}$ 2.5 A
	Power Consumption (Typ.)	On Mode: 45 W Power Saving Mode \leq 0.5 W Off Mode \leq 0.5 W
Dimension	Monitor Size (width x height x depth)	
	With stand	643 mm x 541.5 mm x 251.4 mm (max) 643 mm x 411.5 mm x 251.4 mm (min)
	Without stand	643 mm x 381.2 mm x 37.6 mm
Weight (Without packaging)	7.1 kg	
AC/DC Adapter	AAM-00 type, manufactured by AMPOWER Technology., Co., Ltd. Output: 19.5 V $\overline{\text{---}}$ 5.65 A	
	ADS-110CL-19-3 190110G type, manufactured by Shenzhen Honor Electronic Co., Ltd. Output: 19.0 V $\overline{\text{---}}$ 5.79 A	
Stand Angle Adjustment	Forwards/Backwards: -5° to 20° (Head)	
Environmental Conditions	Operating Condition	Temperature: 10°C to 35°C; Humidity: 10% to 80%
	Storing Condition	Temperature: -20°C to 60°C; Humidity: 5% to 90%

POWER INDICATOR

Mode	On Mode	Power-saving	Off Mode
LED Color	Green	Blinking Green	Off

FCC COMPLIANCE STATEMENT

This equipment has been tested and found to comply within the limits of a Class B digital device pursuant to Part 15 of the FCC Rules. These limits are designed to provide reasonable protection against harmful interference in a residential installation.

This equipment generates, uses, and can radiate radio frequency energy and if not installed and used in accordance with the instructions, may cause harmful interference to radio communications. However, there is no guarantee that interference will not occur in a particular installation.

If this equipment does cause harmful interference to radio or television reception (which can be determined by turning the equipment on and off), the user is encouraged to try to correct the interference by using one or more of the following measures:

- » Reorient or relocate the receiving antenna.
- » Increase the separation between the equipment and the receiver.
- » Connect the equipment into an outlet on a circuit different from that to which the receiver is connected.
- » Consult the dealer or an experienced radio/TV technician for help.

Caution: Changes or modifications not expressly approved by the party responsible for compliance could void the user's (or your) authority to operate the equipment. Only peripherals (digital input/output devices, terminals, printers, etc.) certified to comply with the Class B limits may be attached to this product. Operation with non-certified peripherals is likely to result in interference to radio and TV reception. Only shielded signal cables may be used with this System.

CANADIAN DOC NOTICE

This Class B digital apparatus meets all requirements of the Canadian Interference-Causing Equipment Regulations. Cet appareil numérique de la classe B respecte toutes les exigences du Règlement sur le matériel brouilleur du Canada.



VCCI (for Japan)

この装置は、クラスB 情報技術装置です。この装置は、家庭環境で使用することを目的としていますが、この装置がラジオやテレビジョン受信機に近接して使用されると、受信機障害を及ぼすことがあります。取扱説明書に従って正しい取り扱いをして下さい。



B 급 기기
(가정용 방송통신기자재)

이 기기는 가정용 (B 급) 전자파적합기기로서 주로 가정에서 사용하는 것을 목적으로 하며, 모든 지역에서 사용할 수 있습니다.

* For applicable on ITE (Information Technology Equipment).



For additional information, please visit bloomberg.com/hardware.

The BLOOMBERG PROFESSIONAL service, BLOOMBERG Data and BLOOMBERG Order Management Systems (the "Services") are owned and distributed locally by Bloomberg Finance L.P. ("BFLP") and its subsidiaries in all jurisdictions other than Argentina, Bermuda, China, India, Japan and Korea (the "BLP Countries"). BFLP is a wholly-owned subsidiary of Bloomberg L.P. ("BLP"). BLP provides BFLP with all global marketing and operational support and service for the Services and distributes the Services either directly or through a non-BFLP subsidiary in the BLP Countries. The Services include electronic trading and order-routing services, which are available only to sophisticated institutional investors and only where the necessary legal clearances have been obtained. BFLP, BLP and their affiliates do not provide investment advice or guarantee the accuracy of prices or information in the Services. Nothing on the Services shall constitute an offering of financial instruments by BFLP, BLP or their affiliates. BLOOMBERG, BLOOMBERG PROFESSIONAL, BLOOMBERG MARKETS, BLOOMBERG NEWS, BLOOMBERG ANYWHERE, BLOOMBERG TRADEBOOK, BLOOMBERG TELEVISION, BLOOMBERG RADIO, BLOOMBERG PRESS and BLOOMBERG.COM are trademarks and service marks of BFLP or its subsidiaries.

©2013 Bloomberg Finance L.P. All rights reserved. 556800511 0114