



A Bloomberg Professional Service Offering

23" FLAT PANEL V-SERIES

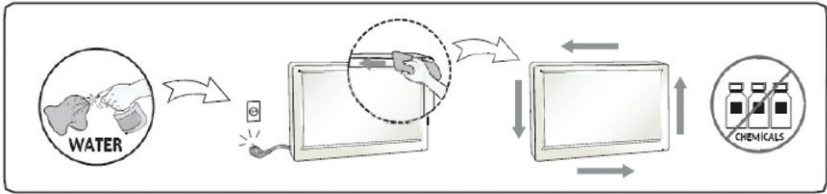
Technical Information

Bloomberg

23" FLAT PANEL V-SERIES

CLEANING THE MONITOR

- » Spray water onto a soft cloth 2 to 4 times, and use it to clean the front frame; wipe in one direction only.
- » Too much moisture may cause staining.



ASSEMBLING & PREPARING



Included Accessories



Power Cord



AC-DC Adapter



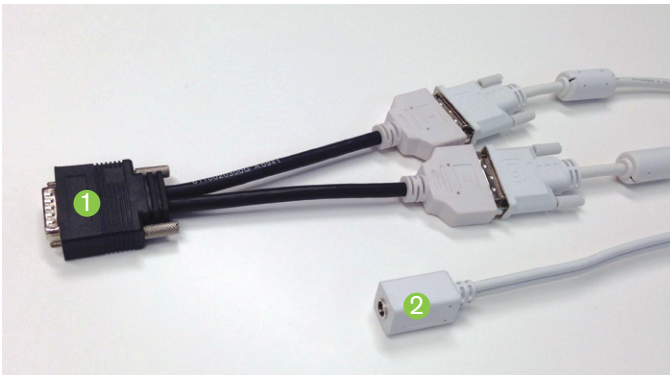
**DVI-D to DMS59
Y-Cable**

23" FLAT PANEL V-SERIES

USING THE MONITOR

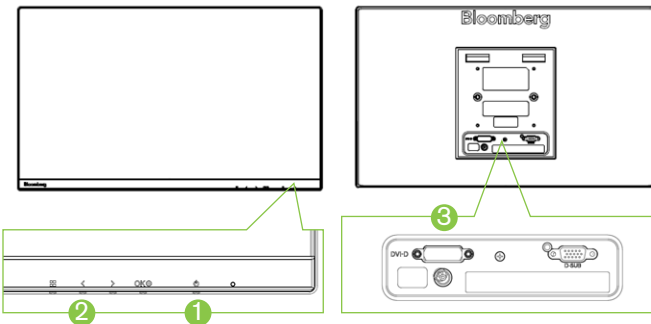
Connecting to a PC

- » The Bloomberg dual 23" monitors are shipped pre-configured with the appropriate cables.
- » The user only needs to connect the monitors to the AC-DC Adapter (provided) and PC video output (not provided). A DMS-59 to DVI-D 'Y-cable' is provided for connection to a PC. The illustration below identifies the connections.
- » Lastly, turn on the monitors and press the menu button to select the DVI-D Input option.
- » The monitors can also be mounted onto VESA brackets with M4 screws (4 screws per monitor).



- ① Y-Cable
Connects to
PC Video Card
- ② Connects
to AC-DC
Adapter

Component and Button Description



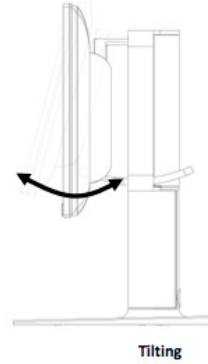
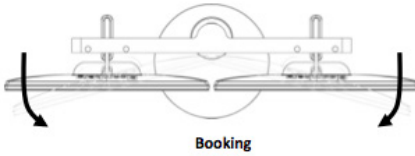
- ① Power Button
- ② Touch buttons
on bottom
of monitor
- ③ Input
Connectors
(power
connection,
DVI-D, D-SUB)

23" FLAT PANEL V-SERIES

Adjusting the Angle

» The dual monitors mounted on the stand have the ability for booking and tilting adjustment for a comfortable viewing angle. The illustrations below show the movement of the monitors.

Note: To avoid damaging the monitors when using the adjustment features, make sure not to apply excessive pressure directly to the screen. Carefully adjust the monitors by holding the edges and bottom bezel.



23" FLAT PANEL V-SERIES

SPECIFICATIONS

Model Number – BFP100-23

Display	Screen Type	23" Active-Matrix TFT LCD screen with anti-glare treatment and LED backlight	
	Pixel Pitch	0.265 mm x 0.265 mm	
	Luminance	250 cd/m ² (Typ.)	
	Viewing Angle (H/V)	178°/178°	
	Aspect Ratio	16:9	
Sync Input	Horizontal Frequency	30 kHz to 83 kHz	
	Vertical Frequency	56 Hz to 75 Hz	
Resolution	Optimal	1920 x 1080 @ 60 Hz	
Color	Depth	16.7M colors	
Input Connector	DVI-D, D-SUB		
Power Consumption (single head)	Input	19 V $\overline{\text{DC}}$ 1.6 A	
	ON Mode	25 W	
	Sleep Mode	≤ 0.4 W	
	OFF Mode	≤ 0.4 W	
AC/DC Adapter	Input	100-240 V ~ 50/60Hz 1.9 A	
	Output	19 V $\overline{\text{DC}}$ 5.79 A	
Dimensions (WxHxD)	With Stand	1078 mm x 481 mm x 300 mm (dual heads)	
	Without Stand	534 mm x 320 mm x 42 mm	
Weight	With Stand	14.6 kg (dual heads)	
	Without Stand	3.0 kg (single head)	
Environmental Conditions	Operating Temperature	10°C to 35°C	
	Operating Humidity	10% to 80% (non-condensing)	
	Storage Temperature	-20°C to 60°C	
	Storage Humidity	5% to 90% (non-condensing)	

POWER INDICATOR

Mode	On Mode	Power-saving	Off Mode
LED Color	Green	Blinking Green	Off

PRODUCT COMPLIANCE

The equipment has been tested and found to comply within the limits of a Class B digital device pursuant to Part 15 of the FCC Rules. These limits are designed to provide reasonable protection against harmful interference in a residential installation.

This equipment generates, uses, and can radiate radio frequency energy and if not installed and used in accordance with the instructions, may cause harmful interference to radio communications. However, there is no guarantee that interference will not occur in a particular installation.

If this equipment does cause harmful interference to radio or television reception (which can be determined by turning the equipment on and off), the user is encouraged to try to correct the interference by using one of more of the following measures:

- » Reorient or relocate the receiving antenna.
- » Increase the separation between the equipment and the receiver.
- » Connect the equipment into an outlet on a circuit different from that to which the receiver is connected.
- » Consult the dealer or an experienced radio/TV technician for help.

Caution: Changes or modifications not expressly approved by the party responsible for compliance could void the user's (or your) authority to operate the equipment. Only peripherals (digital input/output devices, terminals, printers, etc.) certified to comply with the Class B limits may be attached to this product. Operation with non-certified peripherals is likely to result in interference to radio and TV reception. Only shielded signal cables may be used with this System.

CAN ICES-3 (B)/NMB-3(B)



**B 급 기기
(가정용 방송통신기자재)**

이 기기는 가정용 (B 급) 전자파적합기기로서 주로 가정에서 사용되는 것을 목적으로 하며, 모든 지역에서 사용될 수 있습니다.

VCCI (for Japan)

この装置は、クラスB情報技術装置です。この装置は、家庭環境で使用することを目的としていますが、この装置がラジオやテレビジョン受信機に近接して使用されると、受信障害を引き起こすことがあります。取扱説明書に記して正しい取り扱いをして下さい。

VCCI - B



Продукт, сертифицированный после 15 февраля 2013 г.



For additional information, please visit bloomberg.com/hardware.

The data included in these materials are for illustrative purposes only. The BLOOMBERG PROFESSIONAL service, BLOOMBERG Data and Bloomberg Industries (the "Services") are owned and distributed by Bloomberg Finance L.P. ("BFLP") in all jurisdictions other than Argentina, Bermuda, China, India, Japan and Korea (the "BLP Countries"). BFLP is a wholly owned subsidiary of Bloomberg L.P. ("BLP"). BLP provides BFLP with global marketing and operational support and service for the Services and distributes the Services either directly or through a non-BFLP subsidiary in the BLP Countries. Certain functionalities distributed via the Services are available only to sophisticated institutional investors and only where the necessary legal clearance has been obtained. BFLP, BLP and their affiliates do not guarantee the accuracy of prices or information in the Services. Nothing in the Services shall constitute or be construed as an offering of financial instruments by BFLP, BLP or their affiliates, or as investment advice or recommendations by BFLP, BLP or their affiliates of an investment strategy or whether or not to "buy", "sell" or "hold" an investment. Information available via the Services should not be considered as information sufficient upon which to base an investment decision. BLOOMBERG, BLOOMBERG PROFESSIONAL, BLOOMBERG MARKETS, BLOOMBERG NEWS, BLOOMBERG ANYWHERE, BLOOMBERG TRADEBOOK, BLOOMBERG TELEVISION, BLOOMBERG RADIO, BLOOMBERG PRESS and BLOOMBERG.COM are trademarks and service marks of BFLP, a Delaware limited partnership, or its subsidiaries. ©2013 Bloomberg Finance L.P. All rights reserved. 56225263 1113